

INSTRUCTION SHEET 233225 FOR FITTING DOUBLE STACKING KIT 233221 - (BACO35 / BACO35)



SERVICE WORK ONLY TO BE CARRIED OUT BY QUALIFIED PERSONS

Suitable for the following models:

BACO35 / BACO35

Contents:

ITEM	DESCRIPTION	Qty	
A	STAND FRAME	2	} Figure 1
B	STAND SIDE (TOP)	2	
C	CLAMP PLATE	4	
D	SCREW - 3/4" x 1/4" HEX HD	12	
	WASHER - 1/4" SPRING	12	
	WASHER - 1/4" FLAT	12	
E	BOLTING BRACKET	4	} Figure 6
F	SCREW - 2"x3/4"BSW HEX BLACK	4	
G	DOUBLE STACK FRONT WA	1	
H	DOUBLE STACK BACK	1	
I	DOUBLE STACK SIDE	2	
J	SCREW- 1"x 3/16" RAISED CSK	4	
K	SCREW - 3/4"x3/16"POZI MUSH	16	} Figure 8
L	TOP SHEET	2	
M	SCREW - 1/2"x8A POZI MUSH	6	
N	VENT EXTENSION WA	1	
	VENT GASKET	1	
O	CONNECTION SLEEVE	1	
P	HOSE CLAMP - 3"	2	
Q	RTV CLEAR - 150g TUBE	1	

CAUTION:

Ensure unit is isolated from the electrical supply before commencing servicing.

A. UNPACKING

Check that the kit includes all the correct parts and correct quantities for the kit purchased as listed above.

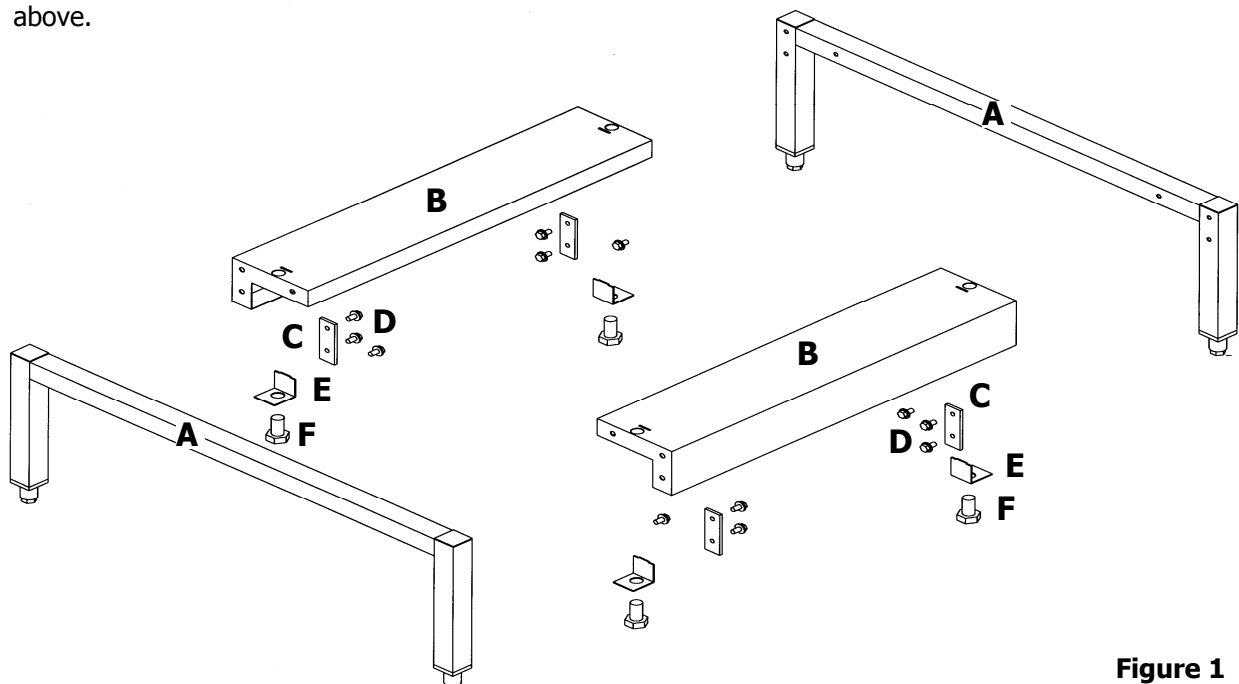


Figure 1

B. STAND

1. Place one stand frame (A) on working surface with threaded holes face up.
2. Fit both sides (C), to the stand frame with the screws and washers (E). Ensuring the clamp plates (D) are fitted on the upright sections inside the sides (Figure 2).
3. Place the other stand frame (A) on working surface with threaded holes face up.
4. Turn the assembly (as in 1 & 2 above) over onto the stand frame.
5. Secure the sides to the stand frame with the screws and washers (E). Ensuring the clamp plates (D) are fitted on the upright sections inside the sides (Figure 2).
6. Feet are already inserted into the ends of the stand frames.

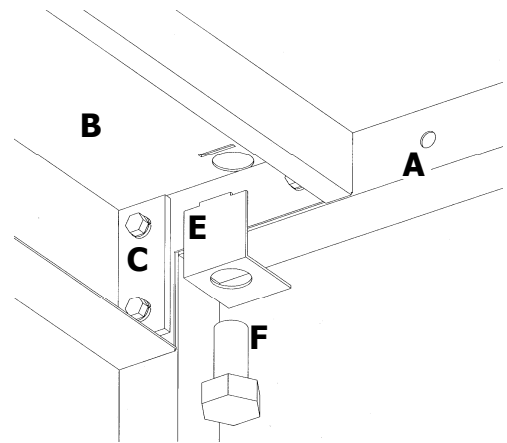


Figure 2

C. BOTTOM OVEN

ONTO STAND

- a. Remove feet from oven.
- b. Oven should be placed onto stand with threaded holes in oven's foot plates lining up with holes on stand (at ends of sides B).
- c. Secure oven using screws (F). It is essential that the Bolting Bracket (E) is correctly in position, refer Figure 2. Bolt up through mounting bracket and stand into oven foot plate.
- d. Adjust stand feet to level the oven.

REMOVE PANELS

- e. Remove side panels from oven, each side panel is held on by 4 screws.
- f. Remove rear RH side corner panel (power and water entry points), secured with 3 screws at front edge of panel. (Figure 3)
- g. Remove the 2 front top side panel support brackets, 2 screws each. (Figure 4)

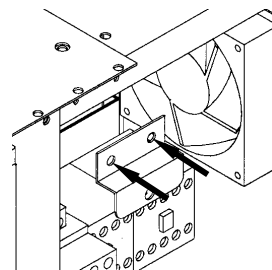


Figure 4

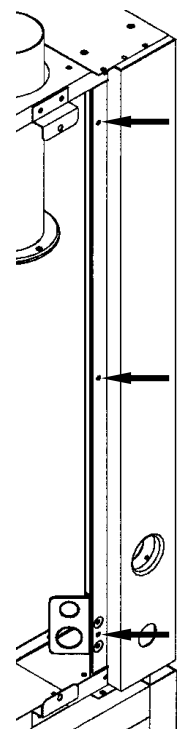


Figure 3

STACKING ASSEMBLY

- h. Place insulation panels (L) onto oven top (Figure 5) fitting into the top of the oven to cover the insulation. There are 3 screws (M) down each side to secure the 2 panels.
- i. Assemble loosely the front (G), back (H) and sides (I), with one screw (J) at each corner (Figure 6), in from the sides.
- j. Place stacking assembly on top of the lower oven and loosely attach, using 2 screws (K) in each corner of the unit (at front and back up from the sides).

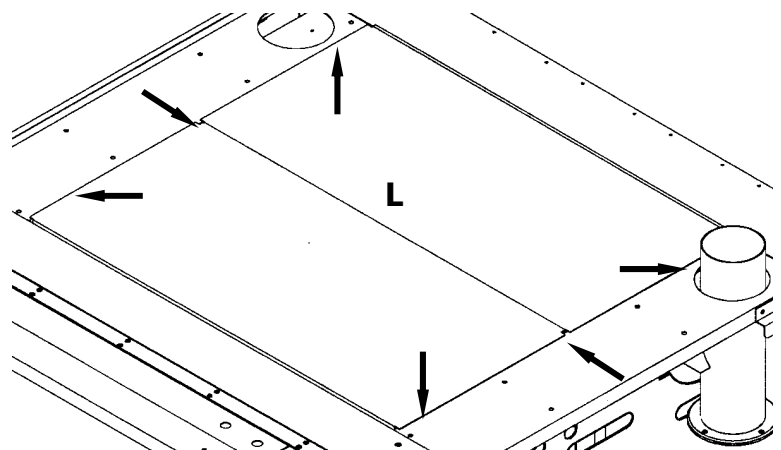


Figure 5

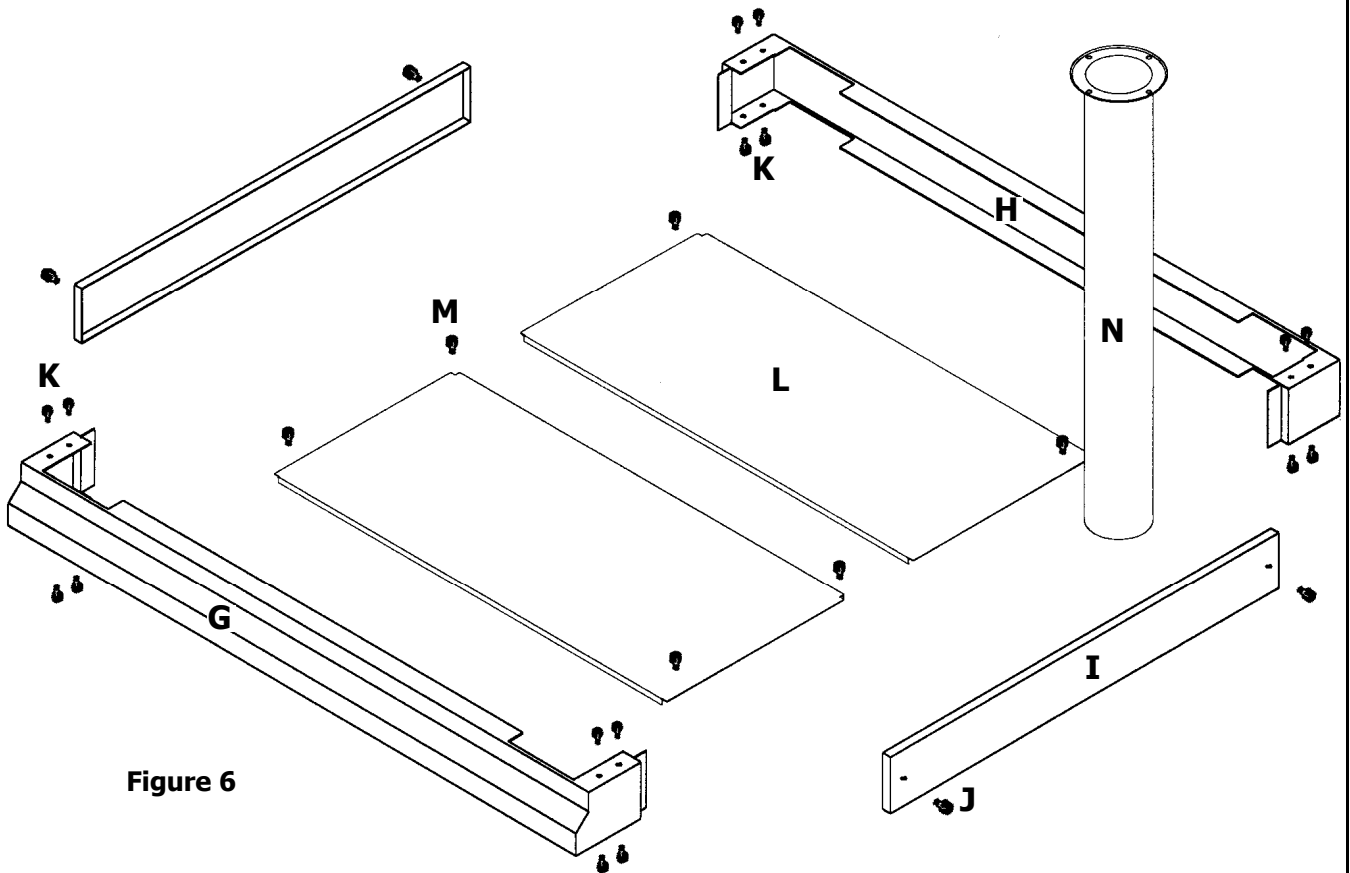


Figure 6

D. TOP OVEN

REMOVE PANELS

- Remove side panels from oven, each side panel is held on by 4 screws.
- Remove rear RH side corner panel (power and water entry points), secured with 3 screws at front edge of panel (Figure 3).
- Remove the 2 front bottom side panel support brackets, 2 screws each.

E. STACKING

STACK

- Remove legs / feet from top unit and place onto bottom unit (on stacking assembly) secure using 2 screws (K) in each corner of the unit (at front and back down from the sides).
- Remove the RH double stack side (I).
- Remove vent bottom plate, 4 screws from underneath.
- Secure vent extension (N) with 3 screws (screw closest to oven is inaccessible), using sealant provided (Q) to ensure sealed connection. See Figure 7.
- Refit the RH double stack side (I).
- Tighten all screws on the stacking assembly.
- Place connection sleeve (O) over join in vent using plenty of sealant (Q) between vent and sleeve, and secure using hose clamps (P). See Figure 8.

RE-ASSEMBLY

- Replace side cover support brackets (Figure 4) at top front of bottom unit and bottom front of top unit, using original screws.
- Replace rear RH panel (Figure 3) on each unit using original screws.
- Replace side panels, using original screws.

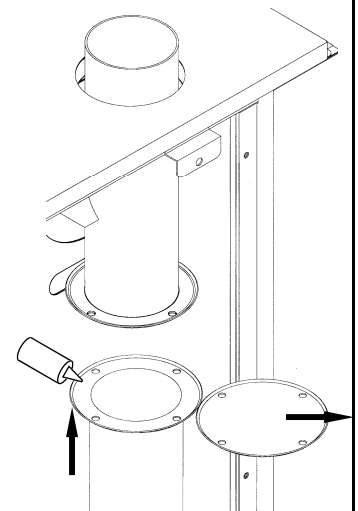


Figure 7

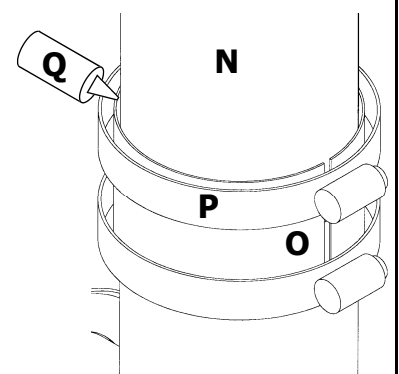


Figure 8