

## **SB-0365**

### **Insider – Ventless Donut Kiosk**

**Subject: Proper System Installation and  
Inspection of Control Heads.**

The system should be checked to make sure the white indicator tab is not binding on the control head back box or cover assembly.

#### **WARNING**

**The pyro-chem system will fail to operate if binding occurs.**

All new & existing units in the field need to be tested.

See pyro-chem bulletin number : 2323 dated 7/23/08.



*US / INTERNATIONAL*  
Tyco Safety Products  
One Stanton Street  
Marinette, WI 54143-2542  
800-526-1079  
715-732-3465

*CANADA*  
Tyco Safety Products  
871 Equestrian Court Unit 1A,  
2nd Floor  
Oakville, ON L6L 6L7 Canada  
877-992-6785  
905-847-0217

# BULLETIN

**Bulletin Number:** 2323

**Date:** July 23, 2008

**TO:** Authorized PYRO-CHEM® Pre-Engineered Systems Distributors and OEMs  
**FROM:** Quality Assurance  
**SUBJECT:** Proper System Installation and Inspection of Control Heads

 **If you own or service any of the following PYRO-CHEM Pre-Engineered System Control Heads, please read and follow the instructions in this Product Service Bulletin.**

**PYRO-CHEM Pre-Engineered Systems Control Head  
Models: NMCH, MCH, NECH, and ECH**

## WARNING

**FAILURE TO READ AND FOLLOW THE INFORMATION IN THIS PRODUCT SERVICE BULLETIN INCREASES THE RISK THAT A PYRO-CHEM PRE-ENGINEERED SYSTEM WILL FAIL TO OPERATE WHEN IT IS NEEDED.**

### Existing Systems

This **PRODUCT SERVICE BULLETIN** affects PYRO-CHEM® KITCHEN KNIGHT® II, MONARCH®, ATTENDANT™, and ATTENDANT™ II Pre-Engineered Systems.

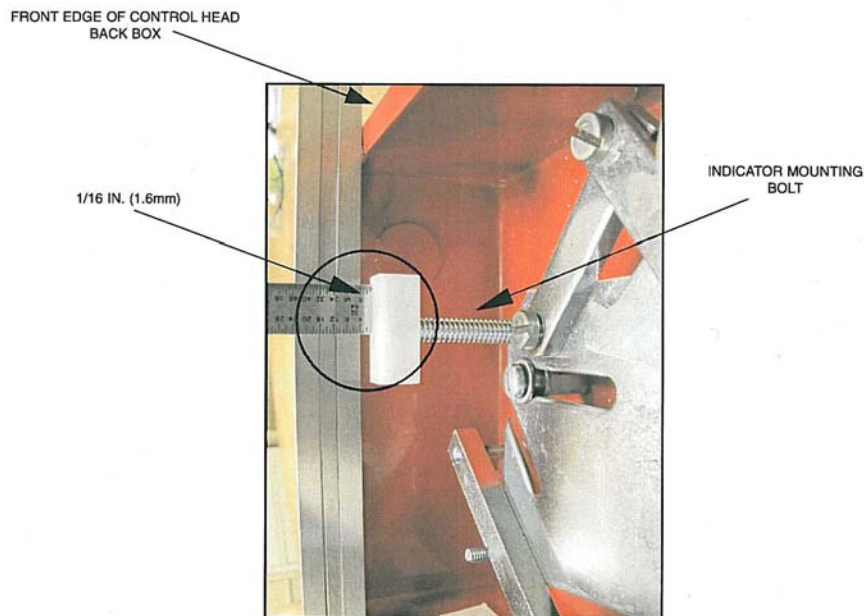
This **PRODUCT SERVICE BULLETIN** is to advise of a potential issue that could render the system inoperative.

The system should be checked to make sure the white indicator tab is not binding on the cover assembly. Binding could cause the system to be inoperative.

### **Corrective Action**

If binding is occurring, the following corrective action should be taken:

As shown in the diagram below, turn the indicator mounting bolt until you have 1/16 in. (1.6 mm) clearance between the front edge of the control head back box and white indicator surface.



### **New Installations**

To ensure avoidance of binding, a new procedure must be followed. Before placing a pre-engineered system into service, all components must be checked for proper operation. As required in the PYRO-CHEM Technical Manuals for Pre-Engineered Systems, the Control Head must be checked to ensure satisfactory operation by cutting the terminal link or "S" hook holding the link; and then by operating the manual pull station with the CO<sub>2</sub> cartridge removed from the control head actuator. **To further ensure proper operation, an additional step is being added to the system checkout after installation and maintenance of the PYRO-CHEM Control Head.**

**It is now required to fully re-assemble the cover plate to the control head prior to operating the control head by cutting the terminal link or pulling the manual pull station.** This additional step will be added to the next revision of the PYRO-CHEM Technical Manuals for KITCHEN KNIGHT II, MONARCH and ATTENDANT/ATTENDANT II Pre-Engineered Systems.

This additional exercise has been added to ensure the white indicator tab is not binding on the cover assembly.

### **Recommended Action**

At your next scheduled service maintenance, please make sure that the Control Head is mechanically tested with the cover plate installed as described in this bulletin.

If you are uncertain how to follow any of the recommendations in this **PRODUCT SERVICE BULLETIN**, or if you have other questions pertaining to this bulletin, please contact your Quality Assurance Department at 1-800-526-1079 or 1-715-732-3465 then press 7.